

Albemarle – Charlottesville Regional Jail Community Meeting

Charlottesville, Virginia

September 15, 2021



INTRODUCTIONS

SUPERINTENDENT MARTIN KUMER

CHRIS ROMAN, MOSELEY ARCHITECTS

DELCENO MILES, THE MILES AGENCY



ACRJ FACILITY FACTS

- ALBEMARLE – CHARLOTTESVILLE REGIONAL JAIL'S VDOC RATED CAPACITY IS 329 BEDS
- ORIGINAL 1975 DESIGN HAD RATED CAPACITY OF 209, INCREASED BY 120 WITH THE 2000 ADDITION, MULTIPLE RENOVATIONS FOLLOWED
- CURRENT ADP (2/16/2021) IS 336, NOT INCLUDING 67 ON HOME ELECTRONIC MONITORING
- CURRENT AREA – APPROXIMATELY 152,900 SF; APPROXIMATE POTENTIAL RENOVATION AREA – 56,000 SF



ANTICIPATED SCHEDULE

Project Planning, Design, and Construction Schedule

- Prepare/Submit Community-Based Corrections Plan Planning Study December 31, 2021
- Authority meetings about project and approval of project January - April, 2022
- Resolution from Authority members to BLRJ May 1, 2022
- BLRJ Approval CBCP Needs Assessment May, 2022
- BLRJ Approval of CBCP Planning Study July-August, 2022
- Application to Treasury Board for bonds for reimbursement June, 2022
- DOC submits to Department of Planning and Budget Sept-Oct, 2022
- Receive Governor approval for funding and inclusion in the budget bill December 1, 2022
- Receive Legislative approval (Legislative session) June, 2023



ANTICIPATED SCHEDULE

Project Planning, Design, and Construction Schedule

- Advertise RFP and Select A/E December 2021 - June, 2023
- Receive Legislative approval (Legislative session) June, 2023
- Award A/E Contract and Design NTP (or earlier at risk) June, 2023
- VDOC required Value Engineering on Design November, 2023
- Complete Construction Documents/secure County design approvals March, 2024
- Advertise for bids May, 2024
- Receive Bids May, 2024
- Negotiate Contract August, 2024
- Notice to Proceed (Construction) August, 2024
- Substantially Complete construction (14 months – to be confirmed) October, 2025
- Final Completion of project November, 2025



COMMUNITY FEEDBACK

Building Exterior

- No bike rack
- More visitor parking
- Improvement to the handicap ramp
- Outdoor recreational space/green space
- More ADA-compliant building access
- Community garden for the inmates to tend
- Better way-finding signage for building access
- Move Magistrate building elsewhere so it's not part of jail facility
- Space for dog-training program

Inmate Amenities

- Tablets for visitation good thing but return to in-person visits when possible
- More toiletries
- Programs to change life trajectory – re-entry support
- More time to go outside for fresh air and sun
- More bottom bunks for those with mobility challenges
- More telephones in areas that are separate by gender
- Space for dog-training program

Building Interior

- Improve maintenance
- Mold
- Insects (cockroaches)
- Crumbling paint
- Poor air quality/HVAC
- HVAC too loud in the gym
- Inconsistent water temperature and mold in the showers
- Leaking toilets and ceilings
- Better usage of unused and current space
- Don't want more beds
- ADA-compliant housing, showers
- More privacy in women's showers
- Install shelves
- Larger classrooms with technology for virtual training
- More technology in each classroom
- Each inmate have an IPAD for coursework
- TV/DVD player
- Projector
- Smartboard
- Intercom button in each classroom
- Space for artistic expression (dance, art)
- Space for dog-training program



COMMUNITY FEEDBACK

Building Interior

- Better monitoring of areas where visitors offer programs/training so they can feel safe
- More space to place disruptive inmates so whole unit isn't locked down
- Improve public bathrooms – “5 points above gas station bathrooms”
- Larger units or fewer inmates in the cells
- Adequate space for counseling those with substance abuse/mental illness
- Use jail for more violent offenders
- Resource room/library
- Exposed nails in older sections that caused injury
- Emergency buttons in cells or the units accessible to inmates
- Use lobby 2 area which is currently closed off
- More visitation areas
- More observation by staff of the inmates and other blind spots
- More humane environment (less noise, carpet, paint choices, etc.)
- Less depressing
- Improve medical care space
- More flexible space for multi-purpose (accordion walls for certain rooms)
- Privacy area for phone calls
- Room dedicated to multifaith prayers
- Virtual receptionist
- Better visitor locker system
- Obscure classroom windows to minimize distractions – 2way mirror
- More indoor recreation, art)
- Family visitation rooms
- Remove the bars – replace with plexiglass or other comparable material
- More open space in social areas with natural lighting
- Remove glass partitions
- Space for dog-training program



EXTERIOR CONTEXT



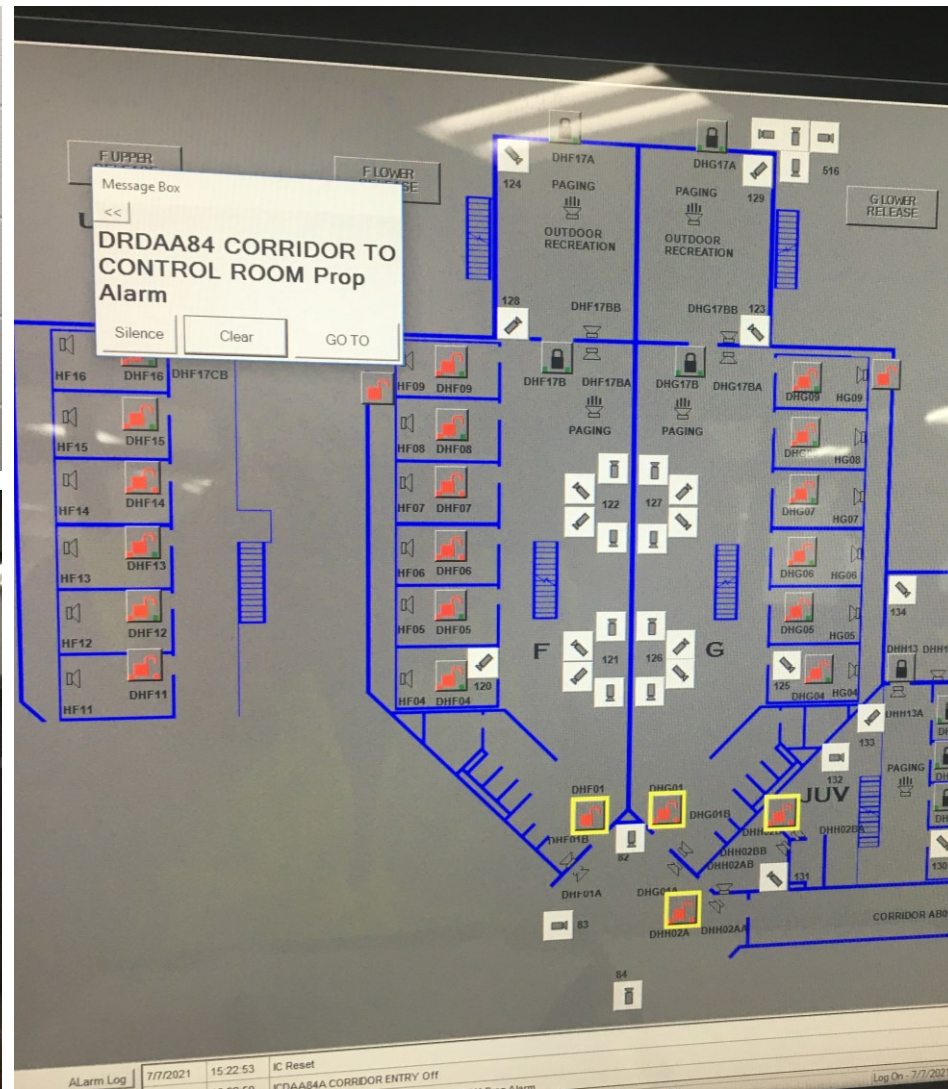
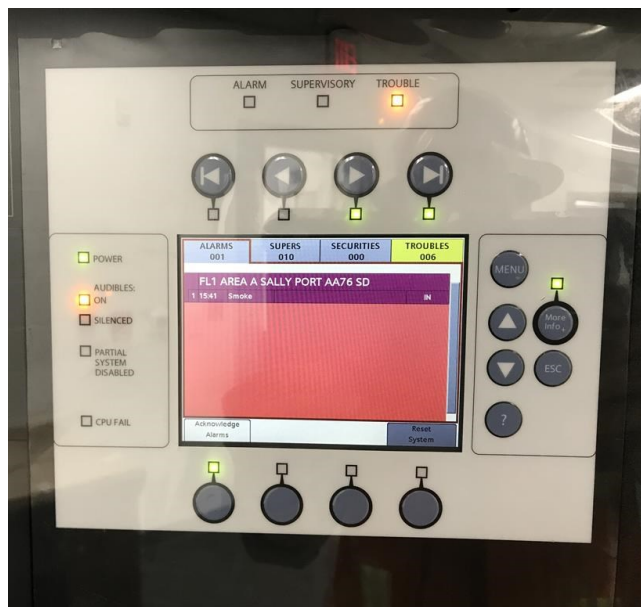
PUBLIC AND VISITATION SPACE



ENERGY EFFICIENCY AND ENVIRONMENTAL IMPACT



TECHNOLOGY



SECURITY AND SAFETY



RECREATION AND MULTI-PURPOSE



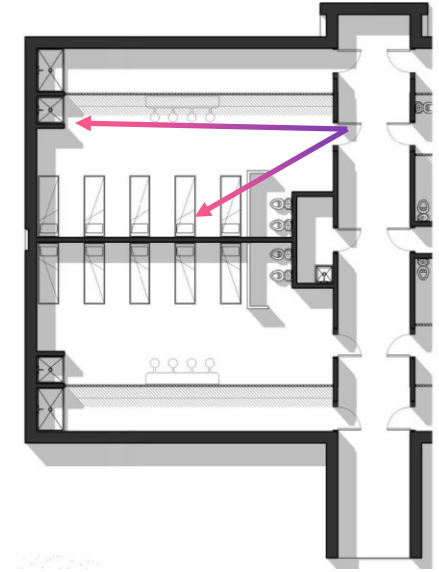
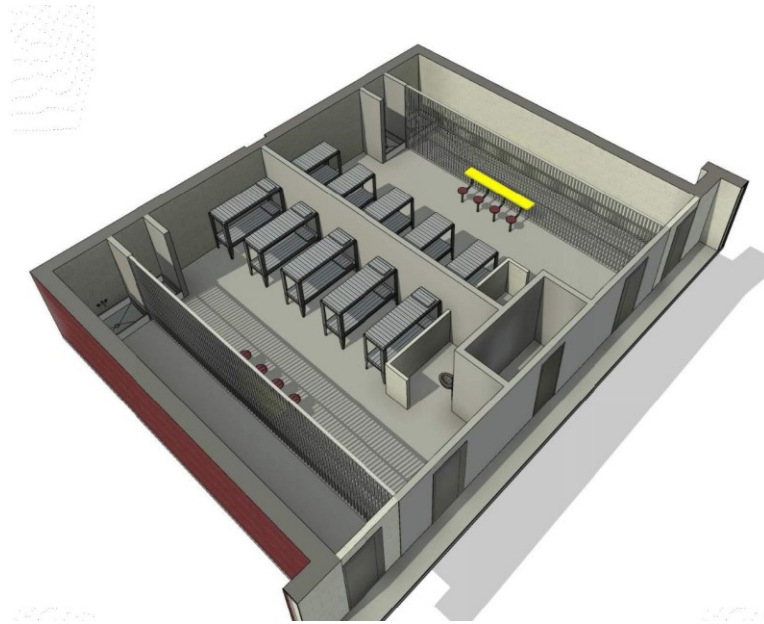
MEDICAL AND MENTAL HEALTH



POTENTIAL IMPROVEMENTS

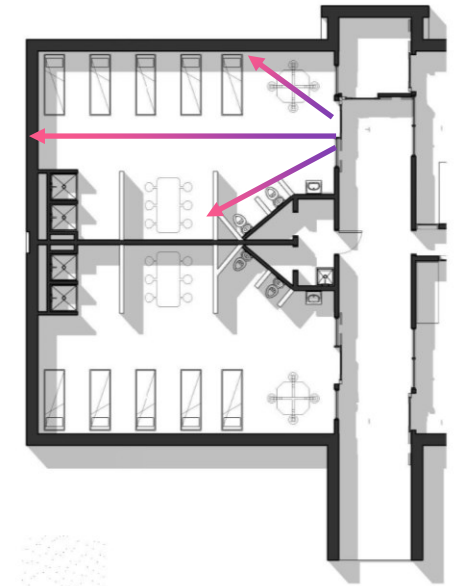
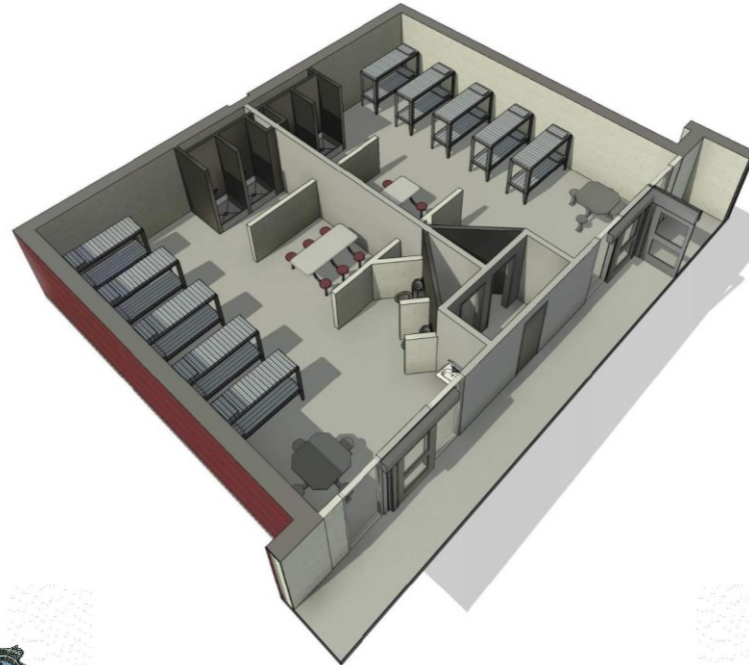
EXISTING DORM LAYOUT

- POOR SIGHT LINES
- NO ADA COMPLIANCE
- INSUFFICIENT DINING SPACE
- POOR DRAINAGE
- INSUFFICIENT DAYROOM SPACE
- SUBSTANDARD FIXTURES



DORM RECONFIGURATION

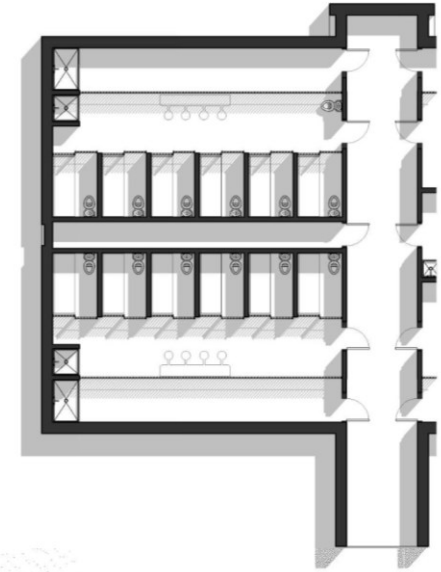
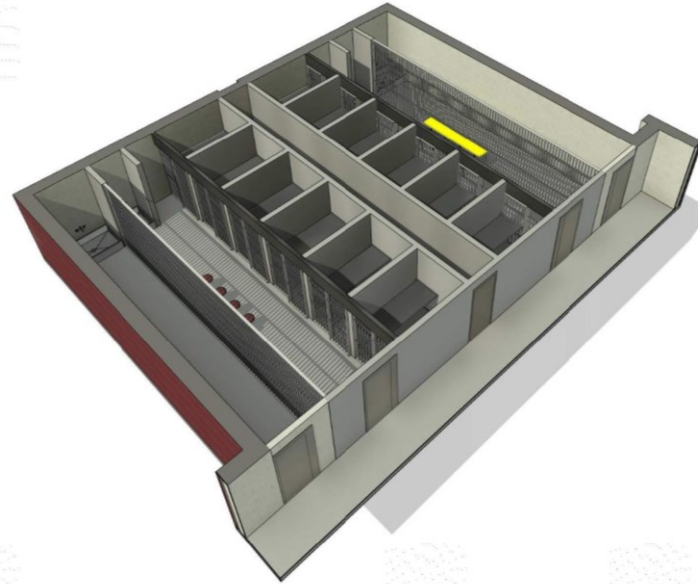
- IMPROVED SIGHT LINES
- ADA COMPLIANT
- SALLYPORT
- SUFFICIENT DINING SPACE
- IMPROVED STAFF AND INMATE SAFETY
- MORE GLAZING



POTENTIAL IMPROVEMENTS

EXISTING CELL LAYOUT

- POOR SIGHT LINES
- NO ADA COMPLIANCE
- INSUFFICIENT DINING SPACE
- POOR DRAINAGE
- INSUFFICIENT DAYROOM SPACE
- SUBSTANDARD FIXTURES



CELL RECONFIGURATION

- IMPROVED SIGHT LINES
- ADA COMPLIANT
- SALLYPORT
- SUFFICIENT DINING SPACE
- IMPROVED STAFF AND INMATE SAFETY
- MORE GLAZING

